

\$149,900 - 106 Timberlane Terrace, Lakeside

MLS® #30046014

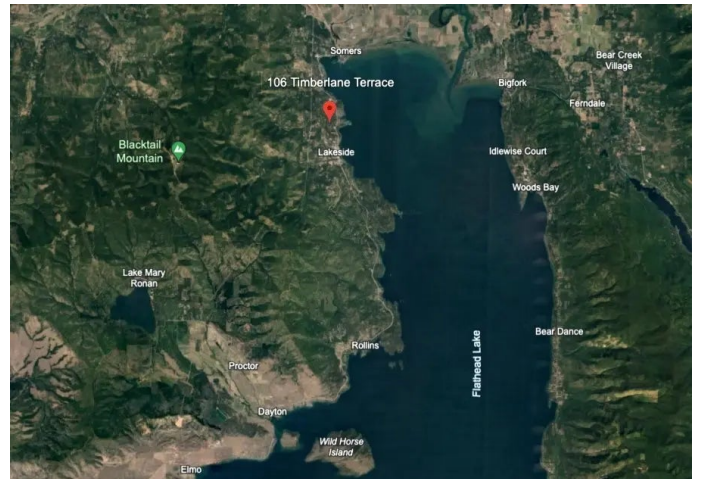
\$149,900

Bedroom, Bathroom,
Land on 0.45 Acres

LAKEVIEW PARK ESTATES, Lakeside, MT

Welcome to your future homesite in the heart of Montana's natural beauty. This forested 0.45-acre lot offers a gently sloped terrain, ideal for building your mountain modern dream home. Tucked away in a quiet neighborhood near downtown Lakeside, you're just moments from the iconic Flathead Lake, with its crystal-clear waters and endless recreational opportunities. Picture mornings among towering pines and evenings soaking in the peace and quiet of nature. With a boat launch, restaurants, shops, and the scenic waterfront Veterans Park just minutes away, you'll enjoy both serenity and convenience.

Whether you're ready to build your primary residence or a recreational retreat, this property offers an unbeatable location in one of Montana's most beloved lake communities. Don't miss out on this investment opportunity—experience the good life in Lakeside!



Essential Information

MLS® #	30046014
Price	\$149,900
Acres	0.45
Type	Land
Sub-Type	Residential
Status	Active

Community Information

Address	106 Timberlane Terrace
Subdivision	LAKEVIEW PARK ESTATES
City	Lakeside
County	Flathead
State	MT
Zip Code	59922

Amenities

Amenities	See Remarks
Utilities	Cable Available, Electricity Available, High Speed Internet Available, Phone Available

Additional Information

Date Listed	April 8th, 2025
Days on Market	176
HOA Fees	300
HOA Fees Freq.	Annually