

# \$599,000 - 467 Wolf Creek Road, Libby

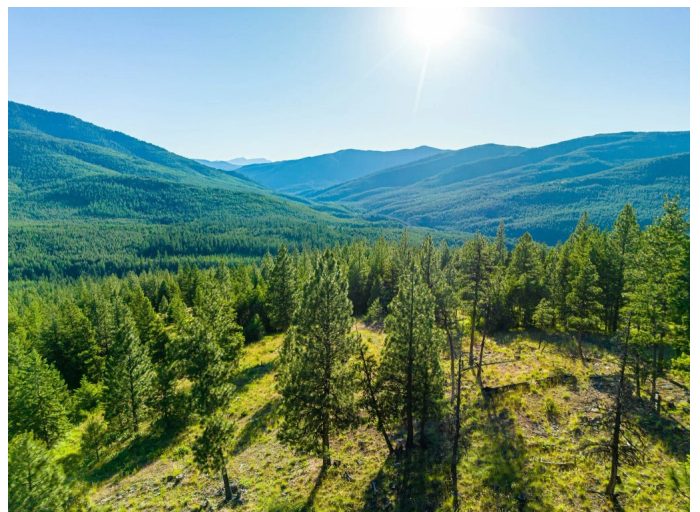
MLS® #30028729

**\$599,000**

Bedroom, Bathroom,  
Land on 120.00 Acres

N/A, Libby, MT

Unique opportunity to own 120 acres surrounded by state and federal land. Discover the perfect remote escape in Northwest Montana. Meticulously cared for by a dedicated land company and selectively logged for timber, this property offers a pristine, vibrant forest setting. Nestled near the Kootenai National Forest, it provides unparalleled privacy and tranquility, surrounded by diverse wildlife. Outdoor enthusiasts will appreciate the endless recreational opportunities, including hiking, camping, and fishing. Nearby, Kootenai and Fisher River and Lake Koocanusa offer great fishing, while the Cabinet Mountains Wilderness and Ross Creek Cedars Scenic Area provide stunning hiking and nature experiences. Essential services can be found in the town of Libby, just 20 miles away. Kalispell is a little over an hour away. A rare opportunity to invest in Montana's natural beauty with ultimate seclusion. See Virtual Tours. Information deemed reliable, Buyers and buyers agents to verify



## Essential Information

MLS® #	30028729
Price	\$599,000
Acres	120.00
Type	Land
Sub-Type	Unimproved Land

Status Active

### **Community Information**

Address 467 Wolf Creek Road

Subdivision N/A

City Libby

County Lincoln

State MT

Zip Code 59923

### **Amenities**

View Mountain(s), Trees/Woods

### **Additional Information**

Date Listed June 28th, 2024

Days on Market 475

Zoning None